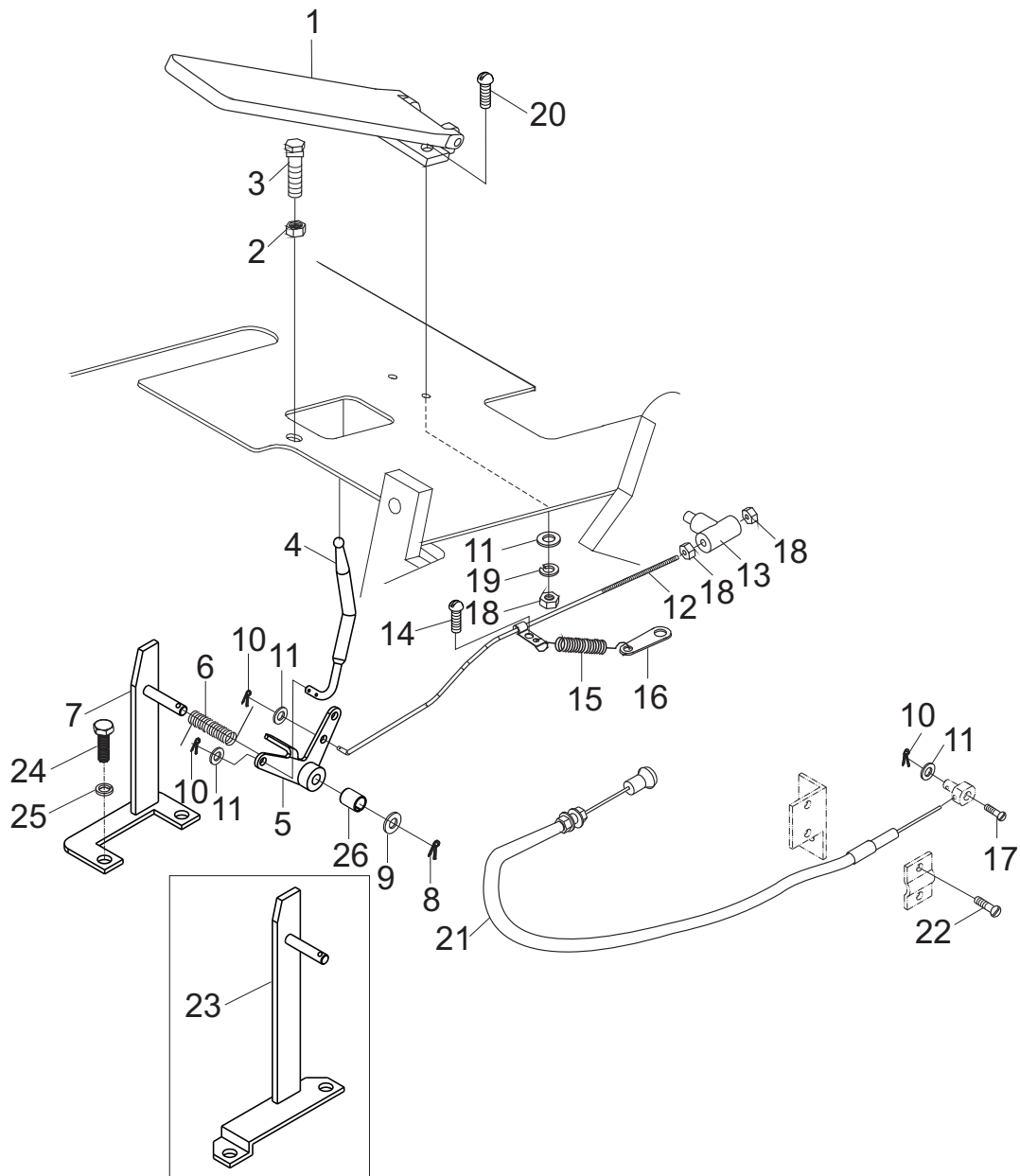


F 油门操纵
F ACCELERATOR PEDAL



20065-20001G

F 油门操纵
F ACCELERATOR PEDAL

序号 Item No.	图号 PartNo.	版本 Edition	零部件名称	Description	件数 Q'ty	备注 Remark	适用时间 Applied time
A	20065-20001G	D04	油门及熄火操纵装置	Accelerator pedal	1		
01	23655-22201A	01	油门踏板总成	Pedal ass'y	1		
02	B4233-00012	00	螺母M12x1.25	Nut	1	GB6171-86	
03	25785-22111	D00	螺栓	Bolt	1		
04	22495-22000	D02	压杆	Rod	1		
05	22495-23000	D01	摇臂总成I	Link ass'y	1		
06	25785-22031	01	弹簧	Spring	1		-2017.06
-	HT995-62201	00	弹簧	Spring	1		2017.07-
07	22495-25000	D00	支架I	Bracket	1	液力车 Hydraulic truck	
08	B3010-3P216	00	销3.2x16	Pin	1	GB91-86	
09	B5310-00008	00	垫圈8	Washer	1	GB97.1-85	
10	B3010-02010	00	销2x10	Pin	4	GB91-86	
11	B5710-00006	00	垫圈6	Washer	6	GB848-85	
12	20065-21000G	D02	拉杆	Rod	1	其余 Etceteras	
-	A97A5-22001	00	拉杆	Rod	1	用于B0泵柴油机For B0 pump diesel engine	
13	3C53-00-09	D01	耳子	Yoke	1		
14	B1110-06016	00	螺钉M6x16	Screw	1	GB67-85	
15	3Q53-00-04	D00	拉簧	Spring	1		
16	22495-22100	D00	弹簧挂板	Plate	1		
17	B1110-04010	00	螺钉M4x10	Screw	1	GB67-85	
18	B4133-00006	00	螺母M6	Nut	4	GB6170-86	
19	B5050-00006	00	垫圈6	Washer, lock	3	GB93-87	
20	B1110-06025	00	螺钉M6x25	Screw	2	GB67-85	
21	20065-20200G	D00	熄火操纵装置	Flameout control unit	1		
22	B1110-04016	00	螺钉M4x16	Screw	2	GB67-85	
23	22495-24000	D00	支架I	Bracket	1	机械车 Machine truck	
24	B0330-10045	00	螺栓M10x45	Bolt	2	GB5783-86	
25	B5050-00010	00	垫圈10	Washer, lock	2	GB93-87	
26	Z2131-01015	00	钢背轴承1015	Bushing	1		

