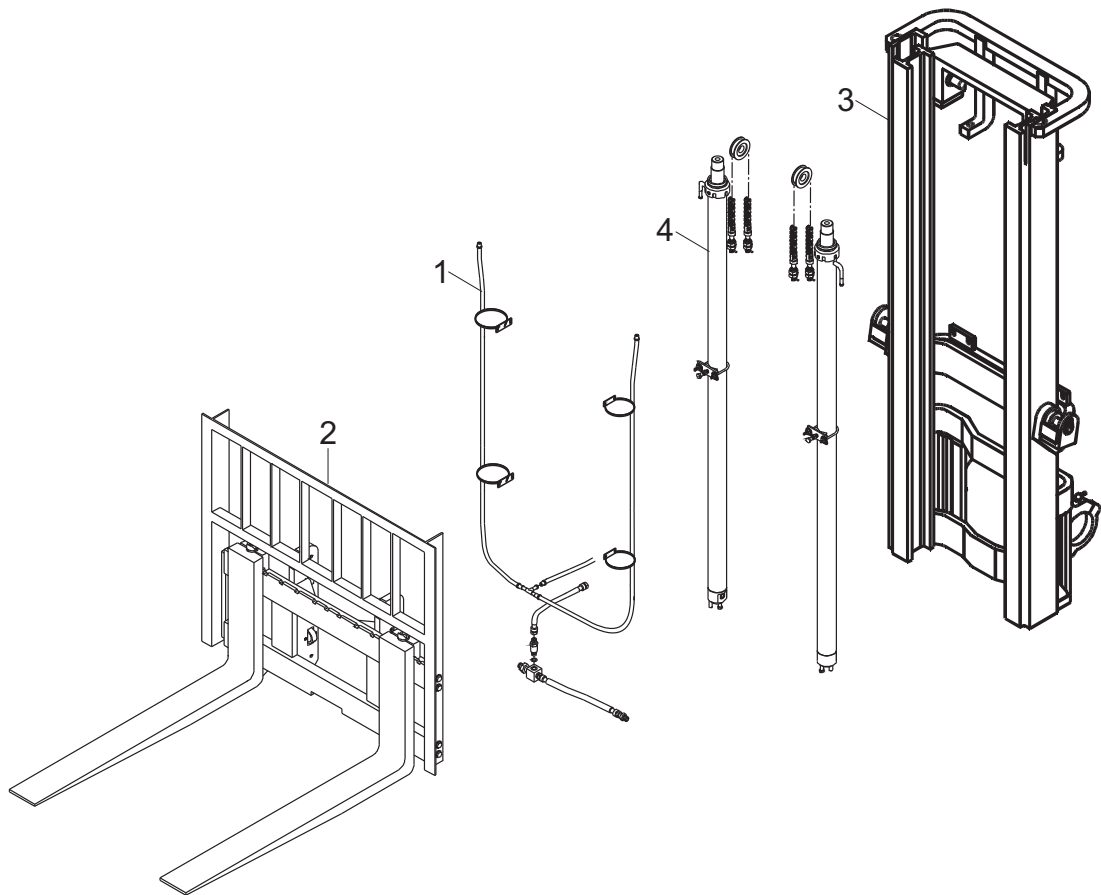


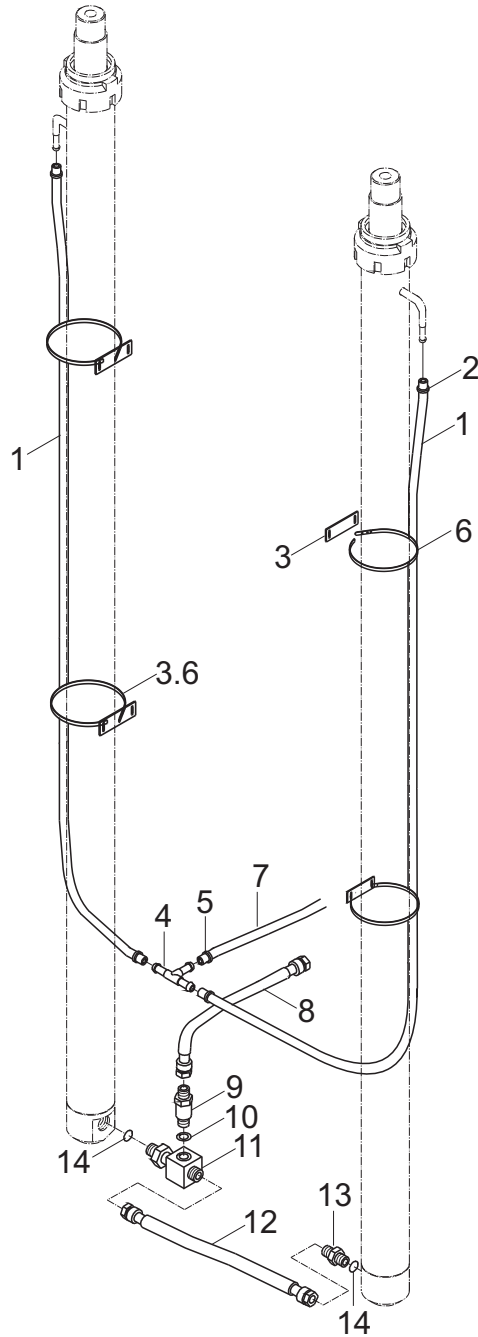
J 起重系统(基本型门架)
J LIFTING SYSTEM (NORMAL MAST)



J 起重系统(基本型门架)
J LIFTING SYSTEM(NORMAL MAST)

序号 Item No.	图号 PartNo.	版本 Edition	零部件名称	Description	件数 Q'ty	备注 Remark	适用时间 Applied time
A	HRDJ058001A	00	起重系统	Lifting system	1		
01	HRD0J58601	00	门架管路系统 (公制)	Mast hydraulic system (Metric)	1	见附表/See attachments	
02	HRD0J58001-1	00	货叉及货叉架	Fork & lift bracket	1	见附表/See attachments	
03	HRD0J58001-2	00	门架	Mast	1	见附表/See attachments	
04	HRD0J58001-3	00	起升油缸安装	Lift cylinder mounting	1	见附表/See attachments	

J 门架管路系统 (基本型门架公制)
J MAST HYDRAULIC SYSTEM (NORMAL MAST METRIC)



HRD0J58601

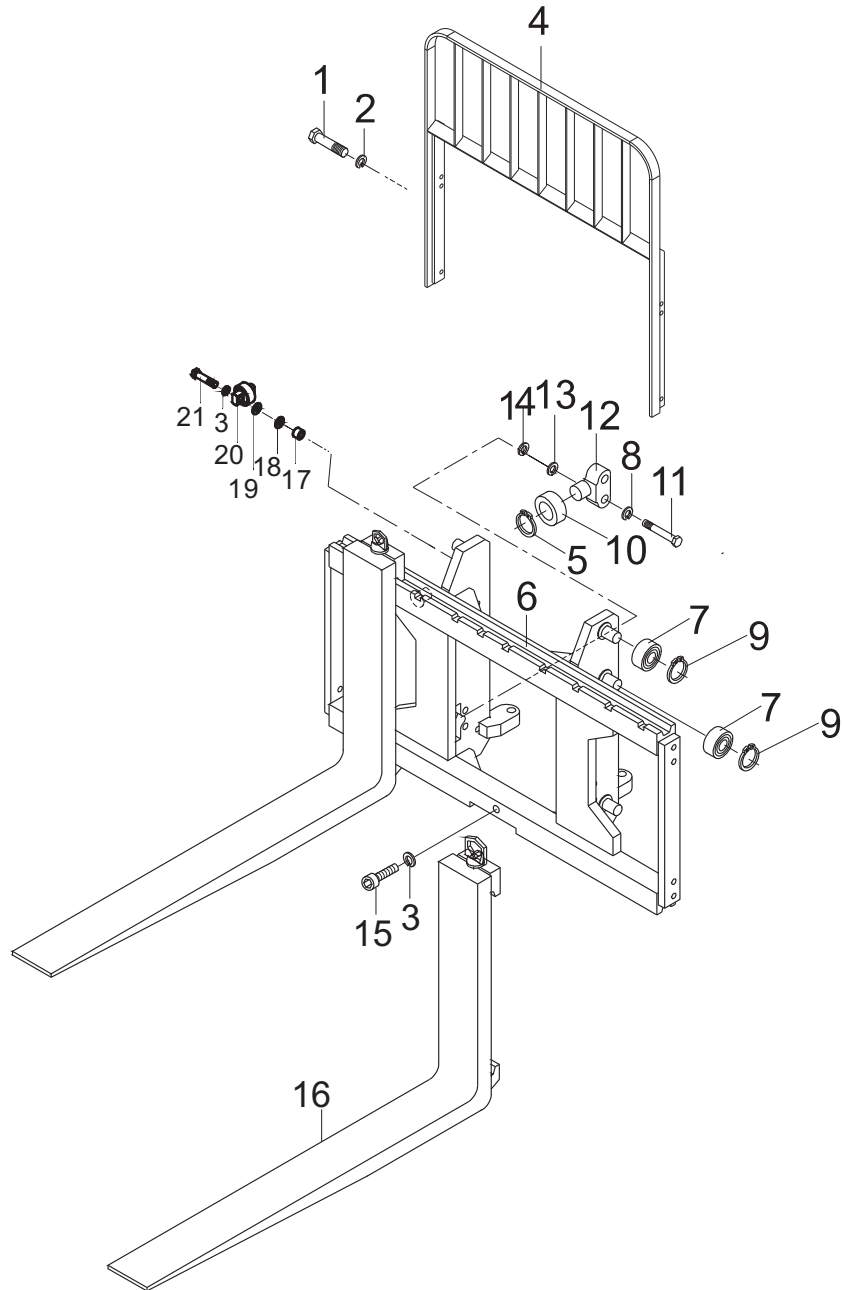
J 门架管路系统（基本型门架公制）
J MAST HYDRAULIC SYSTEM (NORMAL MAST METRIC)

序号 Item No.	图号 PartNo.	版本 Edition	零部件名称	Description	件数 Q'ty	备注 Remark	适用时间 Applied time
A	HRD0J58601	00	门架管路系统（公制）	Mast hydraulic system (Metric)	1		
01	Z7400-12105	00	塑料回油管 Φ12×1050	Plastic hose	2	M200	
-	Z7400-12120	00	塑料回油管 Φ12×1200	Plastic hose	2	M225	
-	Z7400-12130	00	塑料回油管 Φ12×1300	Plastic hose	2	M250	
-	Z7400-12140	00	塑料回油管 Φ12×1400	Plastic hose	2	M270	
-	Z7400-12140	00	塑料回油管 Φ12×1400	Plastic hose	2	M275	
-	Z7400-12155	00	塑料回油管 Φ12×1550	Plastic hose	2	M300 标准 std	
-	Z7400-12170	00	塑料回油管 Φ12×1700	Plastic hose	2	M325	
-	Z7400-12170	00	塑料回油管 Φ12×1700	Plastic hose	2	M330	
-	Z7400-12180	00	塑料回油管 Φ12×1800	Plastic hose	2	M350	
-	Z7400-12185	00	塑料回油管 Φ12×1850	Plastic hose	2	M366	
-	Z7400-12190	00	塑料回油管 Φ12×1900	Plastic hose	2	M370	
-	Z7400-12190	00	塑料回油管 Φ12×1900	Plastic hose	2	M375	
-	Z7400-12210	00	塑料回油管 Φ12×2100	Plastic hose	2	M400	
-	Z7400-12225	00	塑料回油管 Φ12×2250	Plastic hose	2	M425	
-	Z7400-12235	00	塑料回油管 Φ12×2350	Plastic hose	2	M450	
-	Z7400-12250	00	塑料回油管 Φ12×2500	Plastic hose	2	M475	
-	Z7400-12260	00	塑料回油管 Φ12×2600	Plastic hose	2	M500	
-	Z7400-12290	00	塑料回油管 Φ12×2900	Plastic hose	2	M550	
-	Z7400-12315	00	塑料回油管 Φ12×3150	Plastic hose	2	M600	
02	Z4710-00014	00	钢带型弹性环箍 Φ14	Elastic hoop	4		
03	Z4239-44311	00	回油管管夹片	Band	4		
04	JT6031-08011	00	三通接头	Three way	1		
05	Z4710-00018	00	钢带型弹性环箍 Φ18	Elastic hoop	2		
06	Z9260-08035	00	捆扎带8×35	Belt	4		
07	Z7400-14110	00	塑料回油管 Φ14×1100	Plastic hose	1		
08	Z9502-13055GS	00	高压胶管13Ⅱ×550	Hose H. P.	1		
09	HRD20B8604 D28B8-60201	00	限速阀	Flow regulator valve	1		
10	Z6700-02227	00	组合垫圈22	Washer	1	JB982-77	
11	JT6031-22021	00	三通接头（包括14）	Three way (Inc. 14)	1		
12	Z9502-13036P5GS	00	高压胶管13Ⅱ×365	Hose H. P.	1		
13	H22A8-60211	00	切断阀（包括14）	Valve, check (Inc. 14)	1		

J 门架管路系统（基本型门架公制）
J MAST HYDRAULIC SYSTEM (NORMAL MAST METRIC)

序号 Item No.	图号 PartNo.	版本 Edition	零部件名称	Description	件数 Q'ty	备注 Remark	适用时间 Applied time
14	Z6004-02202	00	O形圈22×2.4	O-ring	2	GB1235-76	

J 货叉及货叉架 (基本型门架)
J FORK & LIFT BRACKET (NORMAL MAST)



HRD0J58001-1

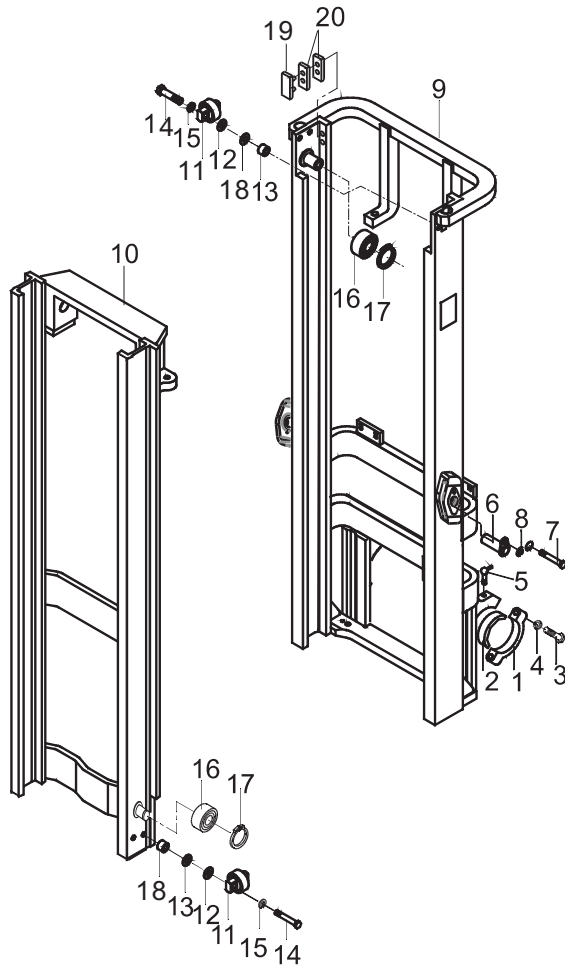
J 货叉及货叉架（基本型门架）
J FORK & LIFT BRACKET (NORMAL MAST)

序号 Item No.	图号 PartNo.	版本 Edition	零部件名称	Description	件数 Q'ty	备注 Remark	适用时间 Applied time
A	HRD0J58001-1	00	货叉及货叉架	Fork & lift bracket	1		
01	B0330-14030	00	螺栓M14×30	Bolt	6	GB5783-86	
02	B5050-00014	00	垫圈14	Washer, lock	6	GB93-87	
03	B5050-00012	00	垫圈12	Washer, lock	1	GB93-87	
04	D7W18-20001	00	挡货架	Bracket	1	标配std	
-	D7W18-21201W	00	非标宽系列挡货架	Bracket with non-standard width	1	选配Optional	
-	D7W18-21301W	00	非标宽系列挡货架	Bracket with non-standard width	1	选配Optional	
-	D7W18-21401W	00	非标宽系列挡货架	Bracket with non-standard width	1	选配Optional	
-	D7W18-21501W	00	非标宽系列挡货架	Bracket with non-standard width	1	选配Optional	
-	D7W18-21601W	00	非标宽系列挡货架	Bracket with non-standard width	1	选配Optional	
-	D7W18-21701W	00	非标宽系列挡货架	Bracket with non-standard width	1	选配Optional	
-	D7W18-21801W	00	非标宽系列挡货架	Bracket with non-standard width	1	选配Optional	
-	D7W18-21901W	00	非标宽系列挡货架	Bracket with non-standard width	1	选配Optional	
-	D7W18-22001W	00	非标宽系列挡货架	Bracket with non-standard width	1	选配Optional	
-	D7W18-22101W	00	非标宽系列挡货架	Bracket with non-standard width	1	选配Optional	
-	D7W18-22201W	00	非标宽系列挡货架	Bracket with non-standard width	1	选配Optional	
-	D7W18-20901H	00	非标高系列挡货架	Bracket with non-standard height	1	选配Optional	
-	D7W18-21001H	00	非标高系列挡货架	Bracket with non-standard height	1	选配Optional	
-	D7W18-21101H	00	非标高系列挡货架	Bracket with non-standard height	1	选配Optional	
-	D7W18-21301H	00	非标高系列挡货架	Bracket with non-standard height	1	选配Optional	
-	D7W18-21401H	00	非标高系列挡货架	Bracket with non-standard height	1	选配Optional	
-	D7W18-21501H	00	非标高系列挡货架	Bracket with non-standard height	1	选配Optional	
-	D7W18-21601H	00	非标高系列挡货架	Bracket with non-standard height	1	选配Optional	
-	D7W18-21701H	00	非标高系列挡货架	Bracket with non-standard height	1	选配Optional	
-	D7W18-21801H	00	非标高系列挡货架	Bracket with non-standard height	1	选配Optional	
-	D7W18-21901H	00	非标高系列挡货架	Bracket with non-standard height	1	选配Optional	
-	D7W18-22001H	00	非标高系列挡货架	Bracket with non-standard height	1	选配Optional	
05	B6150-00030	00	挡圈30	Snap ring	1	GB894.1-86	
06	D0J58-20201A	00	货叉架	Lift bracket	1	标配std	
-	D0J58-20211	00	加宽系列货叉架	Widen lift bracket	1	选配 Optional	
-	D0J58-20221	00	加宽系列货叉架	Widen lift bracket	1	选配 Optional	
-	D0J58-20231	00	加宽系列货叉架	Widen lift bracket	1	选配 Optional	

J 货叉及货叉架（基本型门架）
J FORK & LIFT BRACKET (NORMAL MAST)

序号 Item No.	图号 PartNo.	版本 Edition	零部件名称	Description	件数 Q'ty	备注 Remark	适用时间 Applied time
-	D0J58-20241	00	加宽系列货叉架	Widen lift bracket	1	选配 Optional	
-	D0J58-20251	00	加宽系列货叉架	Widen lift bracket	1	选配 Optional	
-	D0J58-20261	00	加宽系列货叉架	Widen lift bracket	1	选配 Optional	
-	D0J58-20271	00	加宽系列货叉架	Widen lift bracket	1	选配 Optional	
-	D0J58-20281	00	加宽系列货叉架	Widen lift bracket	1	选配 Optional	
-	D0J58-20291	00	加宽系列货叉架	Widen lift bracket	1	选配 Optional	
-	D0J58-20311	00	加宽系列货叉架	Widen lift bracket	1	选配 Optional	
	D0J58-20321	00	加宽系列货叉架	Widen lift bracket	1	选配 Optional	
07	CG92310T-00	00	主滚轮Φ123	End roller	6		
08	B5050-00016	00	垫圈16	Wash lock	4	GB93-87	
09	B6150-00050	00	挡圈50	Snap ring	6	GB894.1-86	
10	180706KT-00	00	滚轮	Spacing roller	2	22198-22341	
11	B0430-16060	00	螺栓M16×1.5×60	Bolt	4	GB5785-86	
12	24609-42131	00	侧滚轮轴	Shaft, side roller	2		
13	D28L0-50901	00	调整垫片	Shim	AR		
14	D0J58-62041	00	垫块	Spacer	4		
15	B8030-12020	00	螺钉M12×20	Screw	1	GB70-85	
16	HRD01D8101	00	货叉总成	Fork ass'y	2	标准 std	
	D01D8-12061	00	货叉总成	Fork ass'y	2	LF107-32A	
	HRD01D8101	00	货叉总成	Fork ass'y	2	LF122-32A	
-	D01D8-12091	00	货叉总成	Fork ass'y	2	LF137-32A	
-	HRD01D8101	00	货叉总成	Fork ass'y	2	LF152-32A	
-	D01D8-12101	00	货叉总成	Fork ass'y	2	LF167-32A	
-	HRD01D8101	00	货叉总成	Fork ass'y	2	LF182-32A	
-	D01D8-12121	00	货叉总成	Fork ass'y	2	LF197-32A	
-	HRD01D8101	00	货叉总成	Fork ass'y	2	LF212-32A	
-	D01D8-12141	00	货叉总成	Fork ass'y	2		
-	HRD01D8101	00	货叉总成	Fork ass'y	2		
-	D01D8-12161	00	货叉总成	Fork ass'y	2		
-	HRD01D8101	00	货叉总成	Fork ass'y	2		
-	D01D8-12201	00	货叉总成	Fork ass'y	2		
-	HRD01D8101	00	货叉总成	Fork ass'y	2		
-	D01D8-12211	00	货叉总成	Fork ass'y	2		
17	DD058-62061	00	垫块	Spacer	8		
18	22548-34051	00	调整垫圈	Shim	AR		
19	22548-34061	00	调整垫圈	Shim	AR		
20	CN-26-00	00	侧滚轮组件	Side roller	2		
21	B0230-12055	00	螺栓M12×55	Bolt	4	GB5782-86	

J 门架 (基本型门架)
J MAST (NORMAL MAST)



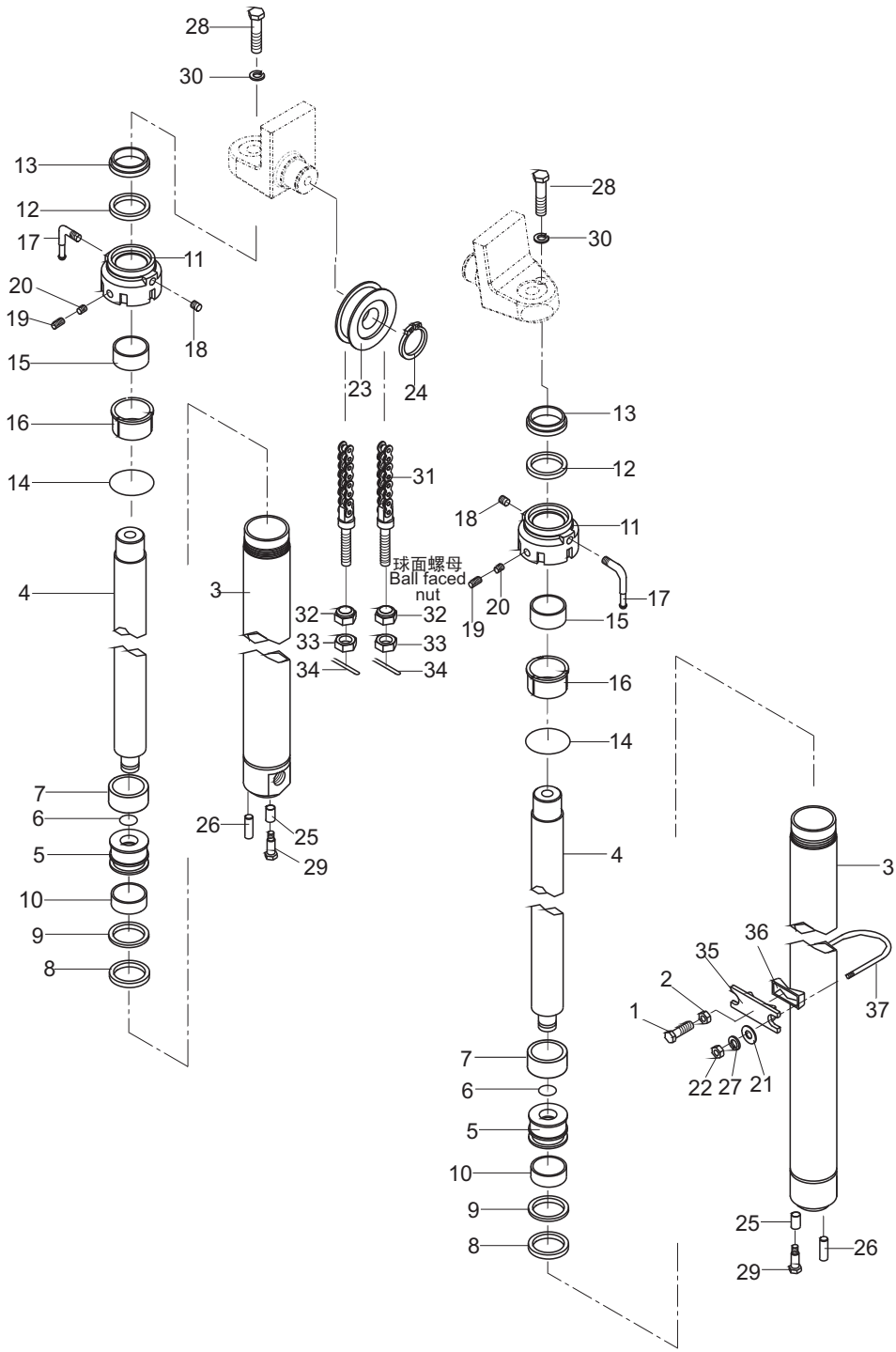
J 门架（基本型门架）
J MAST (NORMAL MAST)

序号 Item No.	图号 PartNo.	版本 Edition	零部件名称	Description	件数 Q'ty	备注 Remark	适用时间 Applied time
A	HRD0J58001-2	00	门架	Mast	1		
01	22018-30064	00	支座盖	Cap	2		
02	D20B8-02001	00	轴衬	Bushing	2		
03	B0430-16070	00	螺栓M16×1.5×70	Bolt	2	GB5785-86	
04	B5050-00016	00	垫圈16	Washer	2	GB93-87	
05	Z2500-10010	00	直通式滑脂嘴	Grease nipple	2	ZBT33001.1-88	
06	D0J58-00201A	00	倾斜缸销轴	Pin axle	2		
07	B0530-10020	00	螺栓M10×1.25×20	Bolt	2	GB5786-86	
08	B5050-00010	00	垫圈10	Washer, lock	2	GB93-87	
09	HRD0J58301A	00	外门架总成	Outer mast	1	M200	
-	D0J58-30311A	00	外门架总成	Outer mast	1	M250	
-	HRD0J58301A	00	外门架总成	Outer mast	1	M270	
-	D0J58-30321A	00	外门架总成	Outer mast	1	M300	
-	HRD0J58301A	00	外门架总成	Outer mast	1	M330	
-	D0J58-30331A	00	外门架总成	Outer mast	1	M350	
-	HRD0J58301A	00	外门架总成	Outer mast	1	M370	
-	D0J58-30341A	00	外门架总成	Outer mast	1	M400	
-	HRD0J58301A	00	外门架总成	Outer mast	1	M425	
-	D0J58-30351A	00	外门架总成	Outer mast	1	M450	
-	HRD0J58301A	00	外门架总成	Outer mast	1	M475	
-	D0J58-30361A	00	外门架总成	Outer mast	1	M500	
-	HRD0J58301A	00	外门架总成	Outer mast	1	M550	
-	D0J58-30371A	00	外门架总成	Outer mast	1	M600	
-	HRD0J58301A	00	外门架总成	Outer mast	1	M200	
-	D0J58-30381A	00	外门架总成	Outer mast	1	M250	
-	HRD0J58301A	00	外门架总成	Outer mast	1	M270	
-	D0J58-30391A	00	外门架总成	Outer mast	1	M300	
-	HRD0J58301A	00	外门架总成	Outer mast	1	M330	
-	D0J58-30401A	00	外门架总成	Outer mast	1	M350	
-	HRD0J58301A	00	外门架总成	Outer mast	1	M370	
-	D0J58-30411A	00	外门架总成	Outer mast	1	M400	
-	HRD0J58301A	00	外门架总成	Outer mast	1	M425	
-	D0J58-30421A	00	外门架总成	Outer mast	1	M450	
-	HRD0J58301A	00	外门架总成	Outer mast	1	M475	
-	D0J58-30431A	00	外门架总成	Outer mast	1	M500	
-	HRD0J58301A	00	外门架总成	Outer mast	1	M550	
-	D0J58-30441A	00	外门架总成	Outer mast	1	M600	
10	HRD0J58304B	00	内门架总成	Inner mast	1	M200	
-	D0J58-31111B	00	内门架总成	Inner mast	1	M250	
-	HRD0J58304B	00	内门架总成	Inner mast	1	M270	
-	D0J58-31121B	00	内门架总成	Inner mast	1	M300	
-	HRD0J58304B	00	内门架总成	Inner mast	1	M330	
-	D0J58-31131B	00	内门架总成	Inner mast	1	M350	
-	HRD0J58304B	00	内门架总成	Inner mast	1	M370	
-	D0J58-31141B	00	内门架总成	Inner mast	1	M400	
-	HRD0J58304B	00	内门架总成	Inner mast	1	M425	
-	D0J58-31151B	00	内门架总成	Inner mast	1	M450	
-	HRD0J58304B	00	内门架总成	Inner mast	1	M475	
-	D0J58-31161B	00	内门架总成	Inner mast	1	M500	
-	HRD0J58304B	00	内门架总成	Inner mast	1	M550	
-	D0J58-31171B	00	内门架总成	Inner mast	1	M600	
-	HRD0J58304B	00	内门架总成	Inner mast	1	M200	
-	D0J58-31181B	00	内门架总成	Inner mast	1	M250	
-	HRD0J58304B	00	内门架总成	Inner mast	1	M270	
-	D0J58-31191B	00	内门架总成	Inner mast	1	M300	

J 门架（基本型门架）
J MAST (NORMAL MAST)

序号 Item No.	图号 PartNo.	版本 Edition	零部件名称	Description	件数 Q'ty	备注 Remark	适用时间 Applied time
-	HRD0J58304B D0J58-31201B	00	内门架总成	Inner mast	1	M450	
-	HRD0J58304B D0J58-31211B	00	内门架总成	Inner mast	1	M475	
-	HRD0J58304B D0J58-31221B	00	内门架总成	Inner mast	1	M500	
-	HRD0J58304B D0J58-31331B	00	内门架总成	Inner mast	1	M550	
-	HRD0J58304B D0J58-31341B	00	内门架总成	Inner mast	1	M600	
11	CN-26-00	00	侧滚轮组件	Side roller	4		
12	22548-34051	00	调整垫圈	Shim	AR		
13	22548-34061	00	调整垫圈	Shim	AR		
14	B0230-12055	00	螺栓M12×55	Bolt	8	GB5782-86	
15	B5050-00012	00	垫圈12	Washer, lock	8	GB93-87	
16	CG92310T-00	00	滚轮Φ123	Roller	4		
17	B6152-00050	00	挡圈50	Snap ring	4	GB894.1-86	
18	DD058-62061	00	垫块	Spacer	8		
19	D24D8-06011	00	限位滑块	Slipper	2		
20	DD058-62021B	00	调整垫片1mm	Shim	AR		
21	DD058-62021	00	调整垫片0.5mm	Shim	AR		

J 起升油缸安装 (基本型门架)
 J LIFT CYLINDER MOUNTING (NORMAL MAST)



J 起升油缸安装（基本型门架）
J LIFT CYLINDER MOUNTING (NORMAL MAST)

序号 Item No.	图号 PartNo.	版本 Edition	零部件名称	Description	件数 Q'ty	备注 Remark	适用时间 Applied time
A	HRD0J58001-3	00	起升油缸安装	Lift cylinder mounting	1		
B	HRD30A8404B	00	起升油缸总成	Lift cylinder	2	M200	
-	D30A8-40411B		(包括03-20, 26)	(Inc. 03-20, 26)			
-	HRD30A8404B	00	起升油缸总成	Lift cylinder	2	M250	
-	D30A8-40421B		(包括03-20, 26)	(Inc. 03-20, 26)			
-	HRD30A8404B	00	起升油缸总成	Lift cylinder	2	M270	
-	D30A8-40431B		(包括03-20, 26)	(Inc. 03-20, 26)			
-	HRD30A8404B	00	起升油缸总成	Lift cylinder	2	标准 std	
-	D30A8-40401B		(包括03-20, 26)	(Inc. 03-20, 26)		M300	
-	HRD30A8404B	00	起升油缸总成	Lift cylinder	2	M330	
-	D30A8-40441B		(包括03-20, 26)	(Inc. 03-20, 26)			
-	HRD30A8404B	00	起升油缸总成	Lift cylinder	2	M350	
-	D30A8-40451B		(包括03-20, 26)	(Inc. 03-20, 26)			
-	HRD30A8404B	00	起升油缸总成	Lift cylinder	2	M370	
-	D30A8-40461B		(包括03-20, 26)	(Inc. 03-20, 26)			
-	HRD30A8404B	00	起升油缸总成	Lift cylinder	2	M400	
-	D30A8-40471B		(包括03-20, 26)	(Inc. 03-20, 26)			
-	HRD30A8404B	00	起升油缸总成	Lift cylinder	2	M425	
-	D30A8-40481B		(包括03-20, 26)	(Inc. 03-20, 26)			
-	HRD30A8404B	00	起升油缸总成	Lift cylinder	2	M450	
-	D30A8-40491B		(包括03-20, 26)	(Inc. 03-20, 26)			
-	HRD30A8404B	00	起升油缸总成	Lift cylinder	2	M475	
-	D30A8-40511B		(包括03-20, 26)	(Inc. 03-20, 26)			
-	HRD30A8404B	00	起升油缸总成	Lift cylinder	2	M500	
-	D30A8-40521B		(包括03-20, 26)	(Inc. 03-20, 26)			
-	HRD30A8404B	00	起升油缸总成	Lift cylinder	2	M550	
-	D30A8-40531B		(包括03-20, 26)	(Inc. 03-20, 26)			
-	HRD30A8404B	00	起升油缸总成	Lift cylinder	2	M600	
-	D30A8-40541B		(包括03-20, 26)	(Inc. 03-20, 26)			
01	B0530-12060	00	螺栓M12×1.25×60	Dust ring	2	GB5786-86	
02	B4223-00012	00	螺母M12×1.25	Seal ring	2	GB6171-86	
03	HRD30A8409B	00	缸体	Cylinder body	2		
04	HRD30A8411	00	柱塞杆	Piston rod	2	M200	
-	D30A8-42011						
-	HRD30A8411	00	柱塞杆	Piston rod	2	M250	
-	D30A8-42021						
-	HRD30A8411	00	柱塞杆	Piston rod	2	M270	
-	D30A8-42031						
-	HRD30A8411	00	柱塞杆	Piston rod	2	标准 std	
-	D30A8-42001					M300	
-	HRD30A8411	00	柱塞杆	Piston rod	2	M330	
-	D30A8-42041						
-	HRD30A8411	00	柱塞杆	Piston rod	2	M350	
-	D30A8-42051						
-	HRD30A8411	00	柱塞杆	Piston rod	2	M370	
-	D30A8-42061						
-	HRD30A8411	00	柱塞杆	Piston rod	2	M400	
-	D30A8-42071						
-	HRD30A8411	00	柱塞杆	Piston rod	2	M425	
-	D30A8-42081						
-	HRD30A8411	00	柱塞杆	Piston rod	2	M450	
-	D30A8-42091						
-	HRD30A8411	00	柱塞杆	Piston rod	2	M475	
-	D30A8-42101						
-	HRD30A8411	00	柱塞杆	Piston rod	2	M500	
-	D30A8-42111						
-	HRD30A8411	00	柱塞杆	Piston rod	2	M550	
-	D30A8-42121						
-	HRD30A8411	00	柱塞杆	Piston rod	2	M600	
-	D30A8-42131						

J 起升油缸安装（基本型门架）
J LIFT CYLINDER MOUNTING (NORMAL MAST)

序号 Item No.	图号 PartNo.	版本 Edition	零部件名称	Description	件数 Q'ty	备注 Remark	适用时间 Applied time
05	D42K0-52551 H22A8-40691	00	活塞	Piston	2		
06	D42K0-52541	00	钢丝B	Steel thread	2		
07	HRD30A8413	00	调整套	Sleeve, adjusted	2		
08	22439-43711	00	U型密封圈63×53×6	U-ring Seal	2		
09	24238-42031	00	挡片63×53×3	Ring, backup	2		
10	23238-40141	00	支承环63×58×20	Wearing	2		
11	D30A8-42341	00	缸盖	Cap	2		
12	24329-45591	00	密封圈50×60×6	Ring seal	2		
13	D01D8-41011	00	防尘圈50×62×7/10	Dust ring	2		
14	Z6003-07503	00	O型密封圈75×3.1	O-ring seal	2	GB1235-76	
15	Z2114-05040	00	钢背轴承5040	Bushing	2		
16	D30A8-42351	00	衬套	Bushing	2		
17	23679-43341	00	管接头	Elbow	2		
18	22518-40151	00	螺塞	Plug	2		
19	B1820-08008	00	螺钉M8×8	Screw	4	GB80-85	
20	25908-44111	00	塞子	Plug	4		
21	B5310-00010	00	垫圈10	Washer	4	GB97.1-85	
22	B4223-00010	00	螺母M10×1.25	Nut	2	GB6171-86	
23	24609-41241	00	链轮	Sheave	2		
24	B6150-00050	00	挡圈50	Snap ring	2	GB894.1-86	
25	HRD20B8407 D20B8-42031	00	隔套	Spacer	2		
26	B3140-10026	00	销D10×26	Pin	2	GB119-86	
27	B5050-00010	00	垫圈10	Washer, lock	4	GB93-87	
28	B0530-20040	00	螺栓M20×1.5×40	Bolt	2	GB5786-86	
29	B0530-12030	00	螺栓M12×1.25×30	Bolt	2	GB5786-86	
30	B5050-00020	00	垫圈20	Washer, lock	2	GB93-87	
31	HRLH1634011-N HRLH1634011-59	00	链条总成(包括32-34)	Chain ass'y(Inc. 32-34)	2	M200	
-	HRLH1634011-N HRLH1634011-69	00	链条总成(包括32-34)	Chain ass'y(Inc. 32-34)	2	M250	
-	HRLH1634011-N HRLH1634011-73	00	链条总成(包括32-34)	Chain ass'y(Inc. 32-34)	2	M270	
-	HRLH1634011-N HRLH1634011-79	00	链条总成(包括32-34)	Chain ass'y(Inc. 32-34)	2	标准 std M300	
-	HRLH1634011-N HRLH1634011-85	00	链条总成(包括32-34)	Chain ass'y(Inc. 32-34)	2	M330	
-	HRLH1634011-N HRLH1634011-89	00	链条总成(包括32-34)	Chain ass'y(Inc. 32-34)	2	M350	

J 起升油缸安装 (基本型门架)
J LIFT CYLINDER MOUNTING (NORMAL MAST)

序号 Item No.	图号 PartNo.	版本 Edition	零部件名称	Description	件数 Q'ty	备注 Remark	适用时间 Applied time
-	HRLH1634011-N HRLH1634011-93	00	链条总成(包括32-34)	Chain ass'y(Inc. 32-34)	2	M370	
-	HRLH1634011-N HRLH1634011-101	00	链条总成(包括32-34)	Chain ass'y(Inc. 32-34)	2	M400	
-	HRLH1634011-N HRLH1634011-105	00	链条总成(包括32-34)	Chain ass'y(Inc. 32-34)	2	M425	
-	HRLH1634011-N HRLH1634011-111	00	链条总成(包括32-34)	Chain ass'y(Inc. 32-34)	2	M450	
-	HRLH1634011-N HRLH1634011-115	00	链条总成(包括32-34)	Chain ass'y(Inc. 32-34)	2	M475	
-	HRLH1634011-N HRLH1634011-121	00	链条总成(包括32-34)	Chain ass'y(Inc. 32-34)	2	M500	
-	HRLH1634011-N HRLH1634011-133	00	链条总成(包括32-34)	Chain ass'y(Inc. 32-34)	2	M550	
-	HRLH1634011-N HRLH1634011-143	00	链条总成(包括32-34)	Chain ass'y(Inc. 32-34)	2	M600	
32		00	球面螺母	Ball faced nut	4		
33	B4230-00022	00	螺母M22×1.5	Nut	4	GB6171-86	
34	B3010-3P240	00	销3.2×40	Pin	4	GB91-86	
35	D42K0-62111	00	油缸支撑块	Support	2		
36	D42K0-62431	00	调整块	Adjusting block	2		
37	D0J58-02021	00	U型螺栓	U-bolt	2		
38	HRD30A8404BXLB	00	后起升缸修理包	Rear lift cylinder repair kits	1		